



PROLYTE PRODUCTS

Leek, May 19th 2008

Re: Stage DEX Toplevel Topping

Dear Prolyte customer,

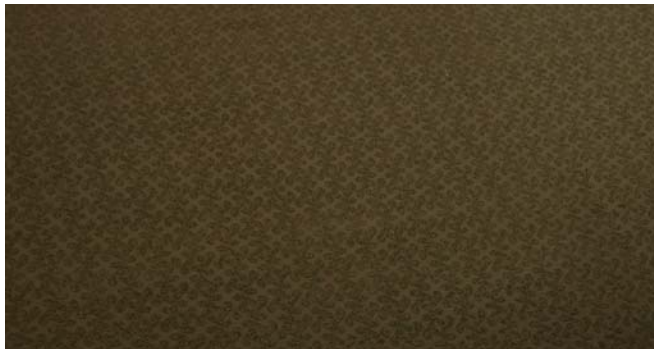
Unfortunately, due to supply problems, Prolyte is forced to change the type of topline plates for the Stage DEX.

Since we are aware of the fact that changing the type of topline plates has consequences for our customers and users, the selection procedure for the topline plate supplier was very strict; Prolyte can now guarantee at least a 3-year supply continuance for this type of topline plates.

The new type of topline plate has better anti-slip features than the previous ones, even in very wet conditions. Further the new anti skidding profile has a higher resistance to wear.

There are no price changes for the Stage DEX topline decks.

The new type of topline will be delivered from approx. week 24.



In the picture: New topping type.

Prolyte Products Group

Marina Prak
Communications & Marketing Manager.