



Email us for FREE
subscription today

infopap@prolyte.com

Tel: +60377813357/552
Fax: +60377813502

IN THIS EDITION

Arc roof

Tokyo Motor Show

The New ST-009
Top Section

2010 Tradeshows

Scheduled Basic
Rigging Training
& Workshops 2010

LATEST NEWS

Asian Edition Vol. 1, March 2010

www.prolyte-asia.com



Quezon City based Trussworks Inc. is a rental company specialised in truss, roof systems and related rigging gear. Apart from their regular Rock 'n Roll business, the company is becoming more specialised in corporate events.

Trussworks was one of the first companies in South East Asia to invest in a Prolite ARC roof system for their rental stock, this decision being based on a growing demand for roof structures for corporate and special events, car launches and weddings. The investment proved to be a right move, apart from a growing demand for their roof system, customers are now even looking for increasing sizes.

Philip Santos, president of Trussworks works and Forsclnk realised that using their Prolite ST-roof System (with measurements of 20 x 20m) was in many aspects overkill for these kinds of applications where practical no loading capacity is required.

Relying on his engineering background he collaborated with Prolite's engineering team to design a XL ARC roof of no less than 24m deep and 12m wide. The design is almost identical



to the standard size ARC roofs, using only 8 legs, which turns out to be a very cost effective solution in respect to building time and transportation volume.

The smart "secret" behind this design is the fact that it uses 3 standard 12 x 8 ARC roofs, and combines them into one roof system, connecting the middle roof to the two others by means of special corners and leaving out a set of legs.

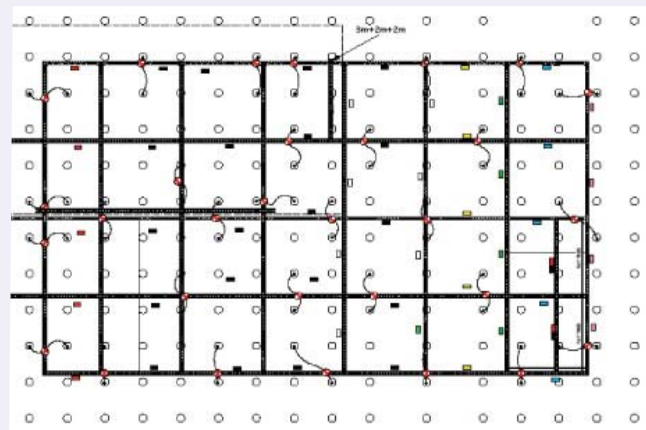
Obviously all 3 roofs can be used independently. "All and all this exercise went really well, it fulfill exactly what our customers have been asking for" commented Philip. "We also offer different types of canopy, but the transparent one is usually the favourite".

Stagetec flies massive grid at Tokyo Motor show

Although the decreased domestic car sales has affected the Tokyo motor show heavily, bringing it almost down by 50%, Japanese car manufacturer Daihatsu still had a dominant position at the show. Tokyo based rental company Stagetec installed a matrix grid, made from H30 truss for their booth with overall measurements of 60x34 metre.

The grid, covering the entire booth, was mainly used for lighting and props and was divided in smaller squares. The complete structure was suspended on 30 hoists.

As Mr. Tadashi Nakazawa, managing director Stagetec commented: "Building this grid really took us by surprise. With an overall length of 400m. truss and 44 box corners to mount, we did not expect to be ready within a day, including all rigging. We did attract some envious looks from other installers, reducing our building time by almost 50%!"



"Building this grid really took us by surprise. With an overall length of 400m. truss and 44 box corners to mount, we did not expect to be ready within a day, including all rigging."

by Mr. Tadashi Nakazawa, Managing Director of Stagetec

2010 Tradeshows

Date	Tradeshows	Country
14-16 February	NARPACA Technical Forum	Australia
17-21 March	WORLDBEX	Philippines
01 - 09 May	Real Estate Expo	Indonesia
16-19 May	VMA Congress	Australia
20-23 May	Palm Expo China	China
03-05 June	Palm India	India
15-18 June	KOBA Show	South Korea
15-18 June	BROADCAST Asia	Singapore
03-04 July	Indobuildtech 2010	Indonesia
16-18 July	SLV Expo	Singapore
22-24 July	PALM Vietnam	Vietnam
24-26 August	INTEGRATE	Australia
11-14 November	PHIL Construct	Philippines
24 - 28 November	Broadcast Expo 2010	Indonesia

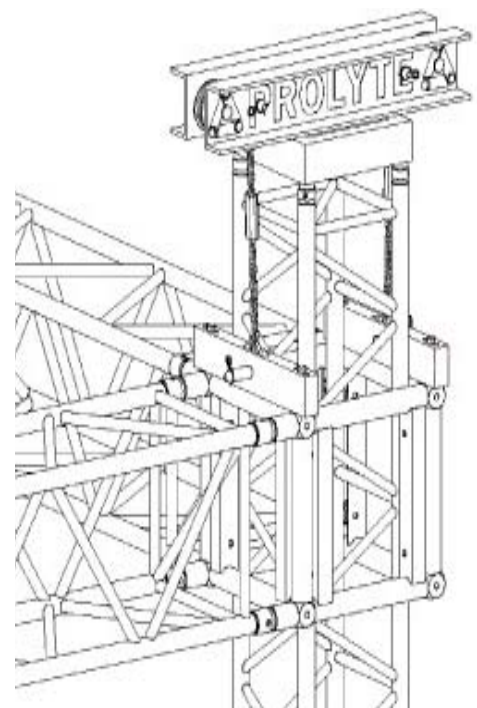
The new ST-009 Top Section

In order to enhance the safety and use of the ST tower system, we have optimised the attachment and thereby, the loading of the dead hang chain. The dead hang chain is used to attach to the sleeve block once the tower has reached its desired height, taking the weight of the hoists.

The ST-009-1 top section has two added wheels for optimal dead hang positioning. The dead hang weight will be balanced automatically, furthermore, only one dead hang chain is needed.

Two 30 mm holes are added to hold a safety pin, which can be used to mount a special sprocket wheel for the dead hang chain. The thus created double purchase system has a dead hang capacity of 6 tons. Using the new dead hang system in an "old style" ST-009 top section, the wheels are placed eccentric.

The load capacity remains 6 tons.



Scheduled Basic Rigging Training & Workshops 2010

Since its start, the basic rigging training and workshop has received good response in Asia.

Due to the strong demand for this course and the growing awareness of the necessity to further develop safe working practices, Prolyte Asia Pacific will continue this training and has scheduled 3 preliminary sessions for 2010.

Planned training dates are:

7th BRTW April 12-16, 2010
8th BRTW September 27- October 1, 2010
9th BRTW November 22-26, 2010

Please be aware that the focus of this training is basic rigging skills and no (commercial) Prolyte product training.

For further information about our training or a registration form, please log on to www.prolyte-asia.com or email to us at

infopap@prolyte.com

IMPORTANT

7th Basic Rigging Training & Workshops 2010 registration closes on **19th March 2010**